



**WATCH
VIDEO**



The laborious task of digging a trench has been transformed since the advent of the Trencher Attachment.

Auger Torque's range of Trenchers cover depths from 0.6 to 1.5 meters and widths up to 350mm, whilst spoil is piled neatly to the side of the trench by the integral auger.

Experience how Trencher Attachments can make light work of your construction project - the days of your trenching bucket may well be over.

Features of our Trenchers

Auger Torque Trenchers are quickly gaining a reputation of being the toughest most versatile units on the market today and are available for a wide range of skidsteers, mini loaders, backhoes and excavators up to 10 tonnes in weight.

Our trenchers come in numerous specifications allowing each unit to be customised to suit your working needs and machine specifications. With models available to suit trenching up to 1500mm deep or a massive 350mm wide we have a unit for most applications.

Using only the highest quality hydraulic motors that allow flow rates of up to 150LPM and then amplified by Auger Torque's own 'bullet-proof' planetary gearbox means that our trenchers have the reliability you need and the power to ensure your trenching is carried out with ease.

Chains are available in a number of different teeth configurations for trenching in soft ground, mixed grounds and even permafrost allowing you to get the job done quickly. Another great feature that will make your job easier is the precision depth control skid which enables the operator to set the machine at up to three different trench depths.

Once level with the ground the trencher will be cutting at the optimal cutting angle whilst maintaining the correct depth. Pulling the trench is as easy as creeping the machine in reverse at a steady

pace and even inexperienced operators will find working with this attachment a breeze.

Don't take our word for it though, you can see it in action by scanning the QR code opposite. You will be blown away by the amount of dirt being removed from the trench and neatly placed off to one side using the single sided Auger. This is beneficial for good access to the trench so you can carry your work out easily and safely while at the same time allowing for effortless backfilling.

Auger Torque Trenchers really are an asset to any operation especially in an age where diversifying your existing plant by adding versatile attachments means more money in the bank.



MT Trencher Range

- Ground Heat Pump Systems
- Drainage & Irrigation
- Gas / Water Piping
- Electric Cable
- Fibre Optic Cable
- Hedge & Small Tree Planting

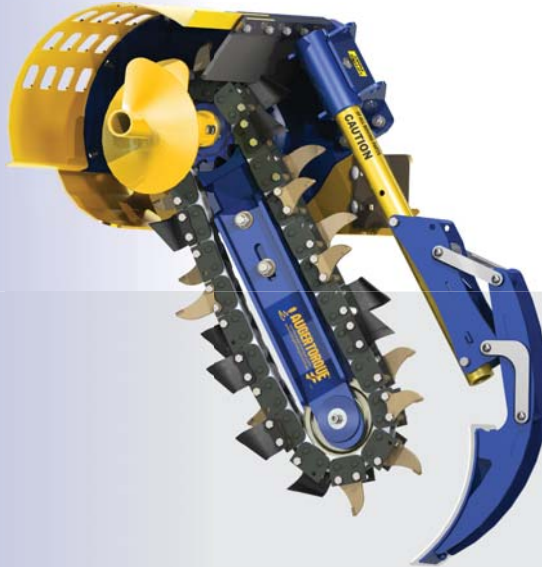


EXCAVATORS 2.5 - 4.5 T & SKIDSTEER LOADERS

For Trenches
100-300mm Width

Oil Pressure Range: 160-240 Bar
Oil Flow Range: 35-65 lpm
Unit Width: 850mm
Unit Height: 736mm
Unit Length: 1465mm
Cutting Width Range: 100-300mm

Technical data may be subject
to change without notice.



EXCAVATORS 3 - 5 T & SKIDSTEER LOADERS

For Trenches
100-300mm Width

Oil Pressure Range: 180-240 Bar
Oil Flow Range: 45-80 lpm
Unit Width: 850mm
Unit Height: 736mm
Unit Length: 1800mm
Cutting Width Range: 100-300mm

Technical data may be subject
to change without notice.



EARTH WEAR PARTS



Earth Tooth
Left Hand
44-2011



Earth Tooth
Right Hand
44-2010

TUNGSTEN WEAR PARTS



Tungsten Tooth
Left Hand
44-2003



Tungsten Tooth
Centre
44-2002



Tungsten Tooth
Right Hand
44-2001

BOOM SPARE PARTS

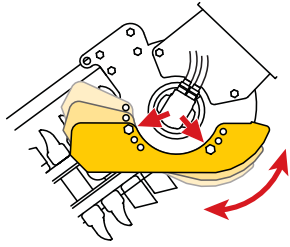


MT Sprocket
42-1033

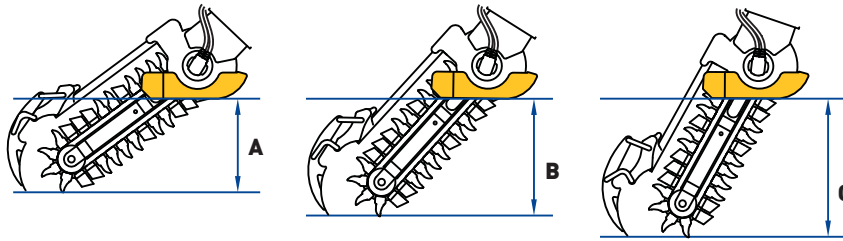


Nose Roller,
Bearing &
Circlip Kit
42-1900-KIT

TRENCH DEPTH CAPABILITY



Adjustable Depth-control Skid allows for 3 different depth settings



	DEPTH A	DEPTH B	DEPTH C
MT 600	300mm	450mm	600mm
MT 900	600mm	750mm	900mm

MOUNTING HITCH OPTIONS

Two versions of mounting hitches are available;

SIDE SHIFT FRAME

For Skidsteer Loaders

MINI LOADER FRAME

for Mini Loaders

EXCAVATOR HITCH

Available in several pin sizes to fit most machines.

Pin diameter options

30mm:	15-53000
35mm	15-53500
40mm	15-54000
45mm	15-54500

GROUND CONDITIONS

EARTH

Best suited to soft grounds like earth and clay.

COMBINATION

Best used in dry, hard or medium ground conditions.

TUNGSTEN

Best used in dry, hard ground conditions.

CHAIN OPTIONS

There are a choice of 3 chain options for each machine to allow for differing ground conditions. Check the chain widths available against Auger Torque charts, price lists and specifications.



EARTH
Soft Ground



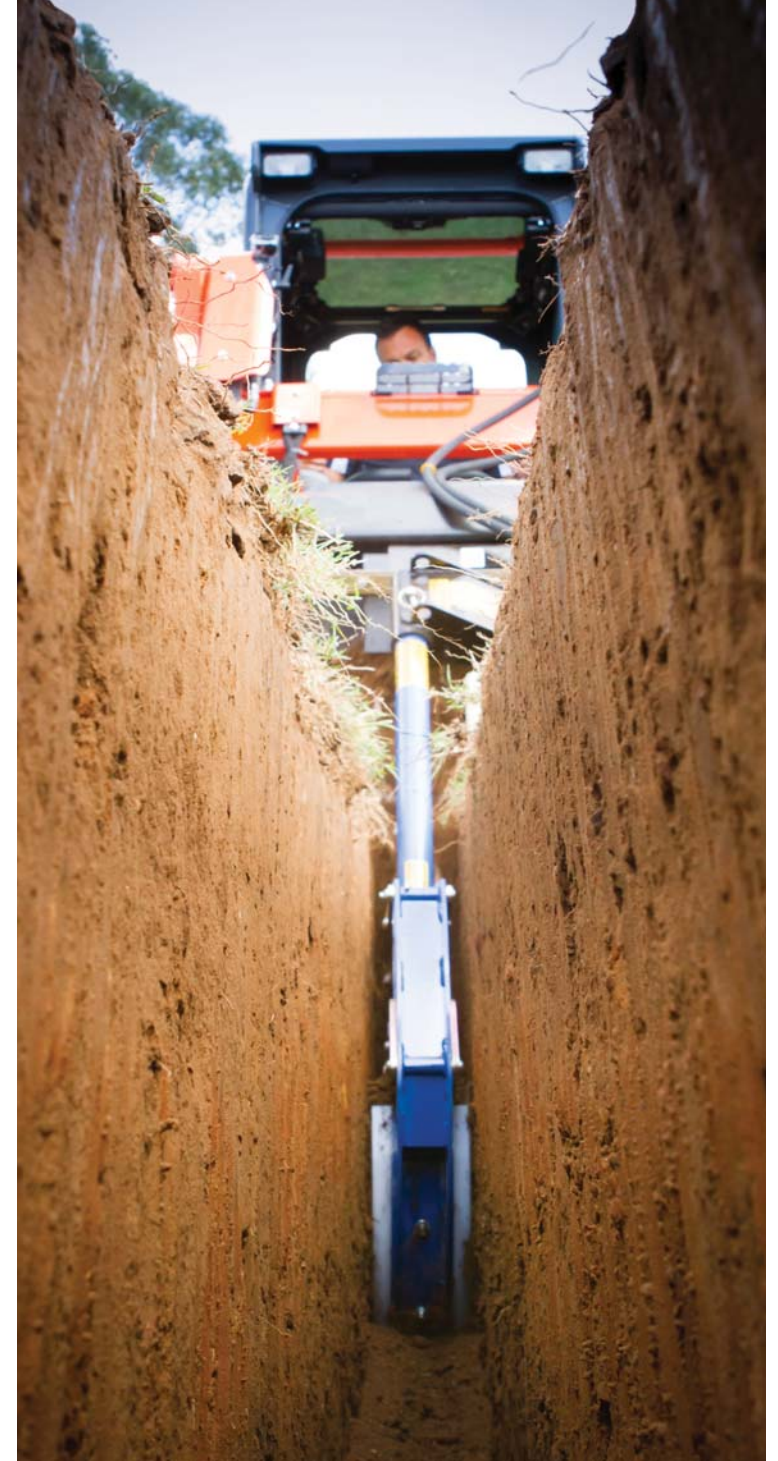
COMBINATION
Mixed Terrain



TUNGSTEN
Hard Ground /
Frozen

CHAIN WIDTH OPTIONS

	100mm	150mm	200mm	250mm	300mm
MT 600 Earth	44-2901	44-2903	44-2905	44-2940	44-2936
MT 600 Combination	44-2902	44-2904	44-2906	44-2919	44-2937
MT 600 Tungsten	44-2918	44-2913	44-2914	44-2945	44-2938
MT 900 Earth	44-2907	44-2909	44-2911	44-2939	44-2933
MT 900 Combination	44-2908	44-2910	44-2912	44-2915	44-2934
MT 900 Tungsten	44-2916	44-2920	44-2921	44-2941	44-2935



XHD Trencher Range

- Ground Heat Pump Systems
- Drainage & Irrigation
- Larger Bore Gas / Water Piping
- Deep Electric Cable
- Fibre Optic Cable
- Hedge & Tree Planting

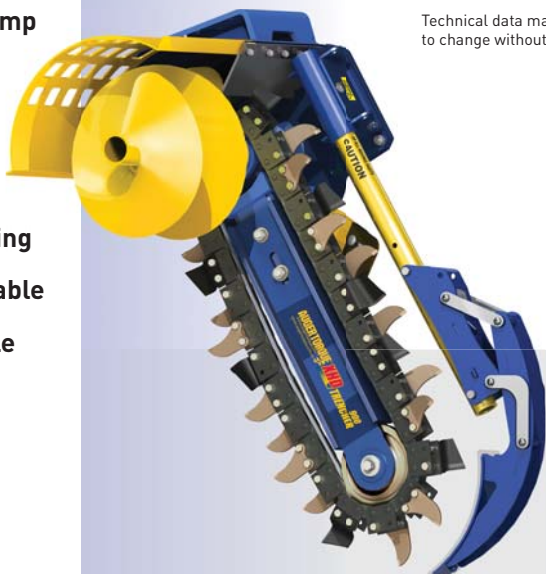


EXCAVATORS 5 - 7.5 T & SKIDSTEER LOADERS

For Trenches
150-350mm Width

Oil Pressure Range: 180-240 Bar
Oil Flow Range: 60-95 lpm
Unit Width: 1018mm
Unit Height: 808mm
Unit Length: 1962mm
Cutting Width Range: 150-350mm

Technical data may be subject to change without notice.

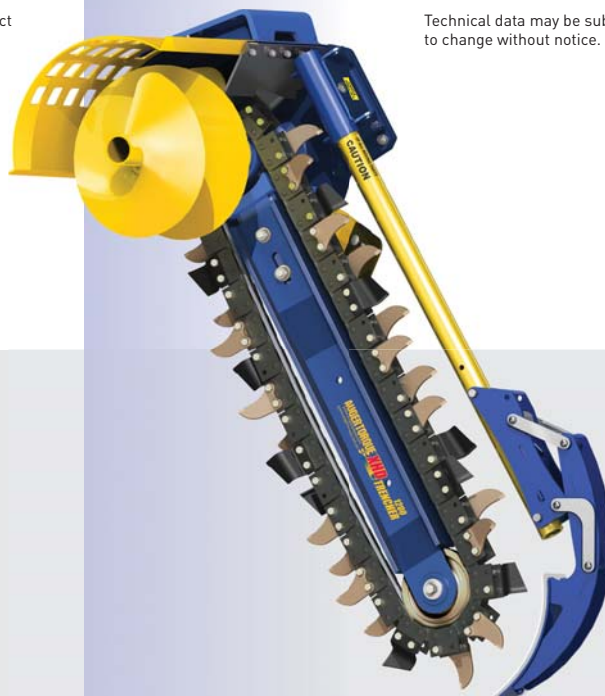


EXCAVATORS 5 - 7.5 T & SKIDSTEER LOADERS

For Trenches
150-300mm Width

Oil Pressure Range: 180-240 Bar
Oil Flow Range: 70-115 lpm
Unit Width: 1018mm
Unit Height: 808mm
Unit Length: 2262mm
Cutting Width Range: 150-300mm

Technical data may be subject to change without notice.



EXCAVATORS 5 - 10 T & SKIDSTEER LOADERS

For Trenches
150-200mm Width

Pressure: 180-240 Bar
Oil Flow Range: 80-135 lpm
Unit Width: 1018mm
Unit Height: 808mm
Unit Length: 2562mm
Cutting Width Range: 150-200mm

Technical data may be subject to change without notice.



EARTH WEAR PARTS



Earth Tooth
Left Hand
44-3001



Earth Tooth
Right Hand
44-3001

TUNGSTEN WEAR PARTS



Tungsten Tooth
Left Hand
44-3003



Tungsten Tooth
Centre
44-3004



Tungsten Tooth
Right Hand
44-3005

BOOM SPARE PARTS

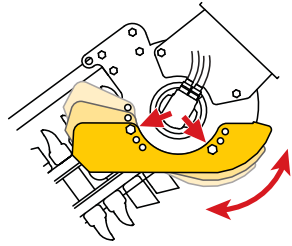


XHD Sprocket
43-1019

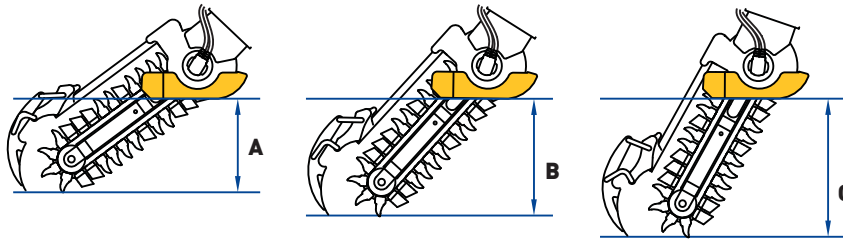


Nose Roller,
Bearing &
Circlip Kit
43-1900-KIT

TRENCH DEPTH CAPABILITY



Adjustable Depth-control Skid allows for 3 different depth settings



	DEPTH A	DEPTH B	DEPTH C
XHD 900	600mm	750mm	900mm
XHD 1200	800mm	1000mm	1200mm
XHD 1500	1000mm	1250mm	1500mm

MOUNTING HITCH OPTIONS

Two versions of mounting hitches are available;

SIDE SHIFT FRAME

For Skidsteer Loaders

MINI LOADER FRAME

for Mini Loaders

EXCAVATOR HITCH

Available in several pin sizes to fit most machines.

Pin diameter options

40mm	15-64000
45mm	15-64500
50mm	15-65000
55mm	15-65500
60mm	15-66000
65mm	15-66500

GROUND CONDITIONS

EARTH

Best suited to soft grounds like earth and clay.

COMBINATION

Best used in dry, hard or medium ground conditions.

TUNGSTEN

Best used in dry, hard ground conditions.

CHAIN OPTIONS

There are a choice of 3 chain options for each machine to allow for differing ground conditions. Check the chain widths available against Auger Torque charts, price lists and specifications.



EARTH
Soft Ground



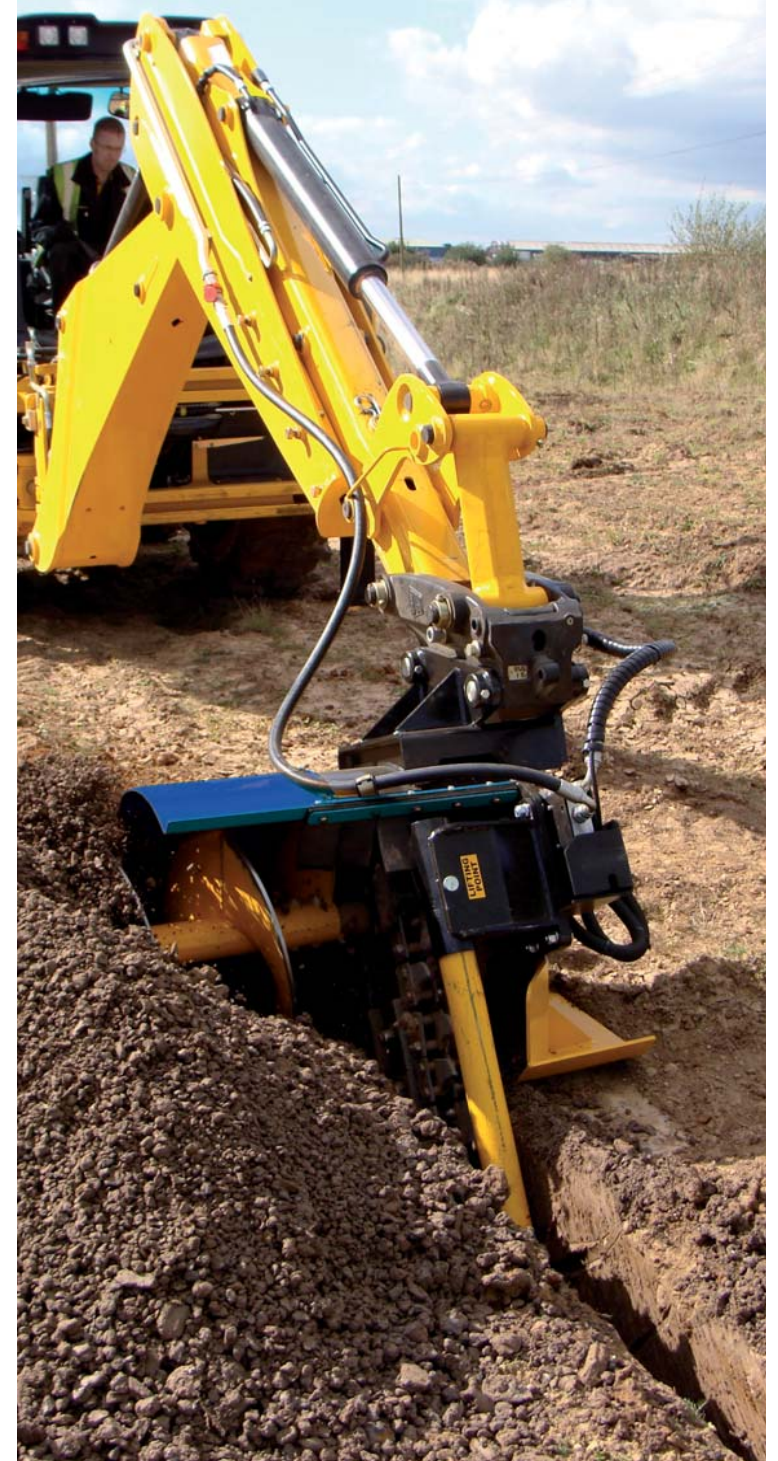
COMBINATION
Mixed Terrain



TUNGSTEN
Hard Ground /
Frozen

CHAIN WIDTH OPTIONS

	150mm	200mm	250mm	300mm	350mm
XHD 900 Earth	44-3904	44-3907	44-3910	44-3913	44-3916
XHD 900 Combination	44-3905	44-3908	44-3911	44-3914	44-3917
XHD 900 Tungsten	44-3906	44-3909	44-3912	44-3915	44-3918
XHD 1200 Earth	44-3922	44-3925	44-3928	44-3931	-
XHD 1200 Combination	44-3923	44-3926	44-3929	44-3932	-
XHD 1200 Tungsten	44-3924	44-3927	44-3930	44-3933	-
XHD 1500 Earth	44-3937	44-3940	-	-	-
XHD 1500 Combination	44-3938	44-3941	-	-	-
XHD 1500 Tungsten	44-3939	44-3942	-	-	-





YOUR NEAREST DEALER IS

Auger Torque Europe Region

Auger Torque Europe Ltd

Cheltenham - United Kingdom

Phone: +44 (0)1451 861 652 Fax: +44 (0)1451 861 660

Email: sales@augertorque.com

Products and specifications subject to change without prior notice.

Some products may not be available in your country or region.

AUGER TORQUE, SHOCK LOCK™, NDS™ and the AUGER TORQUE LOGO are trademarks of Auger Torque Europe Ltd © 2013 Auger Torque Europe Ltd. All Rights Reserved.

