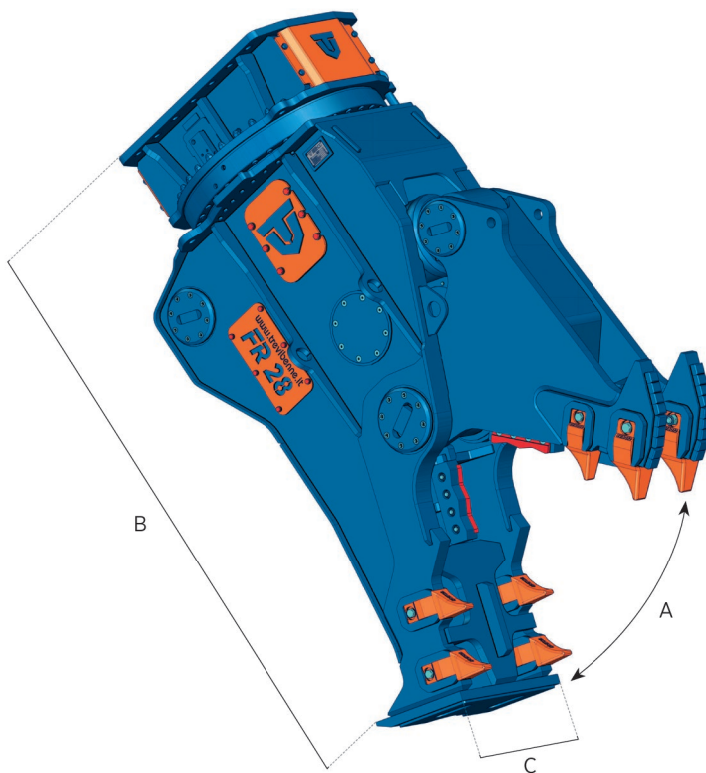




FR SERIES

- ROTATING PULVERIZER
- FRANTUMATORE GIREVOLE
- BROYEUR ROTATIF
- DEMOLEDOR ROTATIVO
- DREHBARE PULVERISIERER



NEW PRODUCT

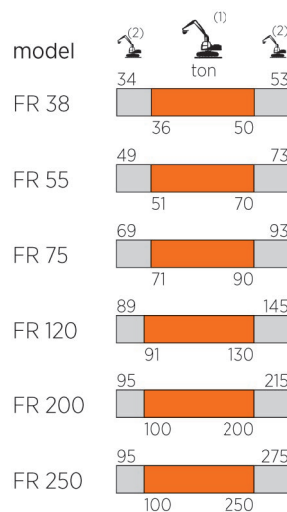
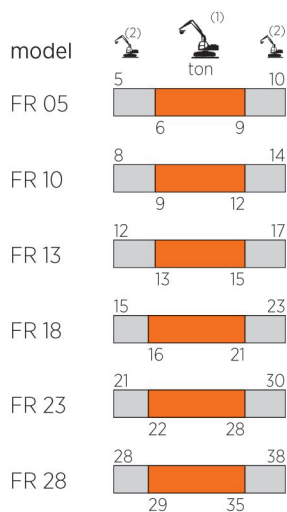
NEW PRODUCT

NEW PRODUCT

NEW PRODUCT

		FR 05	FR 10	FR 13	FR 18	FR 23	FR 28	FR 38
👤	kg.	555	1050	1400	1900	2340	3200	3810
A	mm.	560	650	700	780	880	930	1005
B	mm.	1460	1835	1925	2185	2305	2470	2620
C	mm.	335	370	400	480	540	615	695
📏	mm.	140	150	150	200	200	260	260
🌀	∅ max	mm.	20	25	30	35	40	45
🔧	∅ max	bar	320	320	350	350	350	350
🔧	l/min.	80 / 100	90 / 120	100 / 150	120 / 200	150 / 250	250 / 350	300 / 400
🔧	∅ max	bar	140	140	140	140	140	140
🔧	l/min.	5	50*	50*	50*	50*	25 / 50*	25 / 50*
🔧		/	/	/	/	/	/	/

*Double motor / *Doppio motore / *Deuble moteur / *Doble motor / *Doppelmotor



- (1) Optimum excavator-equipment combination
Accoppiamento escavatore-attrezzatura ottimale
Couplage pelle-équipement optimal
Acoplamiento excavadora-implimento optimal
Optimale Bagger-Ausrüstung Kombination
- (2) Possible excavator-equipment combination
Accoppiamento escavatore-attrezzatura possibile
Couplage pelle-équipement possible
Acoplamiento excavadora-implimento posible
Mögliche Bagger-Ausrüstung Kombination

		FR 55	FR 75	FR 120	FR 200	FR 250
	kg.	5850	8100	13100	22300	24640
A	mm.	1120	1440	1655	1900	2050
B	mm.	2995	3255	3865	4480	5140
C	mm.	735	800	920	1400	1400
	mm.	260	325	400	500	500
	mm.	60	75	90	100	110
	bar	350	350	350	350	350
	l/min.	400 / 500	450 / 600	500 / 800	900 / 1200	900 / 1200
	bar	140	140	140	250	250
	l/min.	25 / 50*	70*	80*	80*	80*
		√	√	√	√	√

*Double motor / *Doppio motore / *Double moteur / *Doble motor / *Doppelmotor



HARDOX®
WEAR PLATE



HARDOX®
IN MY BODY